

ELECTRIC EXCAVATOR



NEW ENERGY
SAVE WORLD

www.new-energyap.com



NEW ENERGY ASIA PACIFIC CO., LTD.



“ We’re Changing the Way
the World Thinks About
Machinery “

New Energy Asia Pacific Co., Ltd

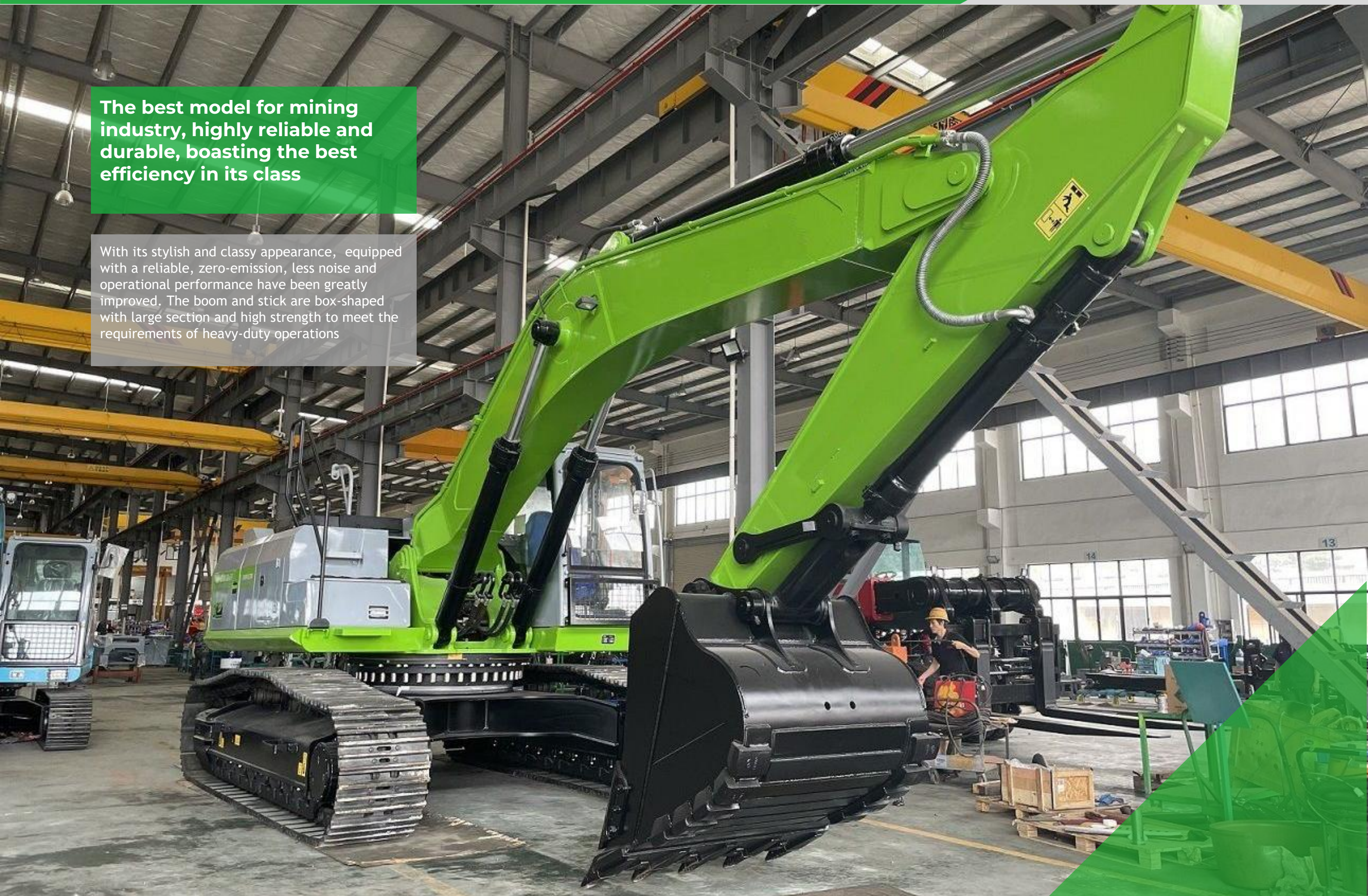
as part of the effort to make construction more sustainable, we are rolling out all-electric versions of traditional construction vehicles. Electric construction equipment isn’t a new concept. Hybrid electric machines have been available for years, and all-electric models of excavators, loaders, dump truck and other heavy machinery are currently available over the world. In coming years, electric heavy machinery will join the ranks of electric cars and public transportation as an eco-friendly alternative, it will be the push for sustainable construction practices intensifie.



ELECTRIC CRAWLER EXCAVATOR

The best model for mining industry, highly reliable and durable, boasting the best efficiency in its class

With its stylish and classy appearance, equipped with a reliable, zero-emission, less noise and operational performance have been greatly improved. The boom and stick are box-shaped with large section and high strength to meet the requirements of heavy-duty operations



ELECTRIC CRAWLER EXCAVATOR

Equipped with a Robust Performance, High-efficiency Electric Motor



- Low noise compared to diesel-powered engines
- Carbon-free, environmentally-friendly power source
- Haimai Generator and CATL lithium battery, energy saving and the power system is optimized to meet the requirements of efficient operation

Reduces Operating Costs, High Safety



- adopts AC/DC dual-mode charging, which can directly supply power to the mains, realize diversification of the work site, improve endurance and save operating costs
- Use domestic high-quality electrical components, the lithium battery of Ningde era, the wire is made of anti-flame retardant material, and the work is reliable and durable.
- The hydraulic system is equipped with a return radiator and back pressure protection to ensure the heat balance of the whole machine
- Protection grade IP67, motor eight-year warranty, battery deep charge and discharge times can last more than 4,000 times, with high reliability and long service life

Customized Power Supply Solutions

- Adpot grid and lithium battery composite power supply technology. It can be powered directly by cables or lithium batteries. Solve the problem that crawler excavator is not flexible in moving.



Cable Power Supply



Lithium Battery Power Supply

SUPER VEHICLE SAFETY



- The whole vehicle is designed through industrial optimization to ensure excellent overall performance and equipment safety.
- Intelligent man-machine interface, real-time monitoring of vehicle status, real-time diagnosis and protection of multi-level software/hardware faults, and support for remote troubleshooting

HIGH-VOLTAGE SAFETY MANAGEMENT

- All high-voltage components, including battery packs, Electric motors, Motor controllers and other on-board electrical appliances, adopt high-grade insulation materials
- After an emergency occurs, the sensor will immediately feed back to the VCU and send instructions to the BMS through the VCU; BMS cuts off the main power circuit. At this time, except for the inside of the battery pack, other components have no high-voltage power.
- In case of abnormal connection at any point on the high-voltage circuit, a fault alarm will occur, and the high-voltage will be cut off immediately.



WATERPROOF IP67



- It has passed the strict rain test.

ELECTRIC CRAWLER EXCAVATOR

The static pressure transmission technology has good automatic adaptability and maneuverability; the hydraulic pump, main valve, swing motor, central rotary joint, hydraulic cylinder and pilot operated valve are all domestic famous brands.

The cab is safe and comfortable, the high-power green air-conditioning system, the all-round adjustable suspension seat, and the safety standard through falling objects, tipping protection and rollover protection.

The boom and the stick adopt a large-section, high-strength box structure to meet the requirements of heavy-duty operations.

The luxurious wide-view cab with sunroof, no noise, good sealing, easy for the driver to observe around.

The Electronic throttle control system is manually adjusted according to different requirements, and can work under heavy load, standard and light load conditions.

The slewing platform and chassis frame structure are strengthened to resist external strong impact. Extended life by more than 30%.



NE80 ELECTRIC CRAWLER EXCAVATOR

Basic	Operating Weight	kg	≤8500
	Bucket Capacity	m ³	0.1-0.28
	Max.Gradeability	%	350
	Max.drivig speed	Km/h	3.8/2.5
	Max.Gradeability	%	≥70%(35°)
	System working pressure	Mpa	28
	Rotating speed	r/min	11.5
	Max.digging force	KN	50
System capacity	Fuel tank capacity	L	200
	Battery capacity	kW.h	109.3
Motor Parameters	Model	HP12517-G202W-R4U4	
	Rated power	kW	46.5
	Max.power	kW	75
	Max.torque, Nm/a sting time	400/20	
	Max.Rotating speed	3000	
	Rated rotating speed	2000	
Hydraulic system	Pressure	28	
	Flow	L/min	160
DC/DC parameters	Input voltage	V	DC540
	Output voltage	V	DC27
	Power	KW	3
Dimension	Overall	5970 x 2190 x 2600	
	Track Gauge	mm	1750
	Crawler wheelbase	mm	2142
	Turning raidius	mm	1965
	Min.Ground clearance	mm	380
	Width of Upper Structure	mm	2100
	Cab height	mm	2600
	Standard track width	mm	450
Working range	Max. Digging Reach	mm	6710
	Max. Digging Depth	mm	4190
	Max. Digging Height	mm	5780
	Max. Dumping Height	mm	4580
	Max. Digging Reach on Ground	mm	6655

Note: Due to technological improvements, the above data are subject to change without prior notice.

NE120 ELECTRIC CRAWLER EXCAVATOR

Basic	Operating Weight	kg	11500
	Bucket Capacity	m3	0.2-0.45
	Pressure to the Ground	KPa	45
	Travel Speed(Low/High)	km/h	10/35
	Rotation Speed	rpm	10
	Gradeability	°	35
	Boom Length	mm	4260
	Arm Length	mm	2580
Hydraulic system	Type	Load sensing system	
	Fuel tank capacity	L	150
	Pressure	MPa	28
	Flow	L/min	180
Main Pump Electric Motor	Motor model	HP12529-G182W-R4P4	
	Rated power	kW	74
	Rated torque	Nm	392
	Highest frequency	HZ	120
	Rated speed	r/min	1800
	Rated voltage	V	380
	Rated current	A	133
Battery	Type	Lithium iron phosphate battery	
	Storage power	kwh	175
	Rated voltage	V	579.6
	Rated Capacity	Ah	302
Dimension	Overall	mm	7026 x 2400 x 2700
	Track Distance	mm	2745
	Radius Swing Center to Rear End	mm	2010
	Counterweight Ground Clearance	mm	880
	Track Gauge	mm	1960
	Track Shoe Width(Standard)	mm	450
	Min.Ground Clearance	mm	395
	Max. Digging Reach	mm	7236
Working range	Max. Digging Depth	mm	4868
	Max. Digging Height	mm	6925
	Max. Dumping Height	mm	4706
	Max. Arm Digging Force	kN	63.5
	Bucket Radius	mm	1328

Note: Due to technological improvements, the above data are subject to change without prior notice.

NE150 ELECTRIC CRAWLER EXCAVATOR

Basic	Operating Weight	kg	13900
	Bucket Capacity	m3	0.5-0.7
	Pressure to the Ground	KPa	45
	Travel SpeedLow/High	km/h	3.1/5.3
	Rotation Speed	rpm	12.4
	Gradeability	°	35
	Boom Length	mm	4600
	Arm Length	mm	3122
Hydraulic system	Type	Negative flow system	
	Hydraulic Tank Capacity	L	150
	Pressure	MPa	28
	Flow	L/min	300
Main Pump Electric Motor	Motor model	HP129D8-G202W-R8U4	
	Rated power	kW	92
	Rated torque	N	440
	Highest frequency	HZ	133.3
	Rated speed	r/min	2000
	Rated voltage	V	380
	Rated current	A	175
Battery	Type	Lithium iron phosphate battery	
	Storage power	kwh	210
Dimension	Overall	mm	7750 x 2500 x 2760
	Track Distance	mm	2745
	Radius, Swing Center to Rear End	mm	2290
	Counterweight Ground Clearance	mm	880
	Track Gauge	mm	1960
	Width of Upper Structure	mm	2490
	Track Shoe WidthStandard	mm	500
	Min.Ground Clearance	mm	395
Working range	Max. Digging Reach	mm	8197
	Max. Digging Depth	mm	6039
	Max. Digging Height	mm	8651
	Max. Dumping Height	mm	5552
	Bucket Radius	mm	1328
	Max. Bucket Digging Force	kN	92.7
	Max. Arm Digging Force	kN	67.6

Note: Due to technological improvements, the above data are subject to change without prior notice.

NE250 ELECTRIC CRAWLER EXCAVATOR

Basic	Operating Weight	kg	25500
	Bucket Volume	m³	1.2
	Average Ground Pressure	Kpa	50
	Swing Speed	rpm	10.5
	Travel Speed(high/low)	km/h	5.3/3.5
	Grading capacity	° /%	35° /70%
	Boom Length	mm	6000
	Arm Length	mm	2960
	Overall	mm	10140 x 3190 x 3100
High voltage management unit (Grid input)	Hydraulic Tank Capacity	L	204/324
	Rated power	kW	120
Motor system	Peak power	kW	160
	Rated power	kW	126.5
	Rated torque	Nm	672
	Rated speed	rpm	1800
	Rated frequency	Hz	120
	Rated voltage	V	380
System Operating Pressure	Rated current	A	252
	Implement Circuits	MPa	31.4
	Power Boost	MPa	34.3
	Swing Circuits	MPa	24.5
	Travel Circuits	MPa	31.3
Working range	Max. Digging Radius	mm	10290
	Max. Digging Depth	mm	6940
	Max. Vertical digging depth	mm	6100
	Max. Digging height	mm	9680
	Max. Dumping height	mm	6785
	Max. Digging force(arm/bucket)	kN	135/170
	Max.Traction force	kN	205

Note: Due to technological improvements, the above data are subject to change without prior notice.

NE360 ELECTRIC CRAWLER EXCAVATOR

Whole Machine	Operating Weight	kg	35000
	Standard bucket capacity	m³	1.6
	Average Ground Pressure	Kpa	62.8
	Travel Speed(high/low)	km/h	5.0/3.0
	Grading capacity	°/%	35°/70%
Working Device	Boom	mm	6470
	Arm	mm	2800(Standard)
Digging Force	Max excavating force(arm/bucket)	kN	196/231
	Max.traction	kN	267
High voltage management unit (Grid input)	Hydraulic Tank Capacity	L	250/390
	Rated power	kW	180
Motor system	Peak power	kW	240
	Rated power	kW	188
	Rated torque	Nm	1000
	Rated speed	rpm	1800
	Rated frequency	Hz	180
	Rated voltage	V	380
	Rated current	A	362
System Operating Pressure	Implement Circuits	MPa	34.3
	Swing Circuits	MPa	26
	Travel Circuits	MPa	34.3
	Maximum Rated Flow of main pumps	L/min	2×280
Overall dimensions	Overall lenth	mm	11320
	Overall width	mm	3340
	Overall height	mm	3580
	Shoe width	mm	600
Working range	Minimum Foreside Swing Radius	mm	4450
	Minimum Tail Swing Radius	mm	3500
	Maximum Digging Radius	mm	10700
	Maximum Digging Depth	mm	6980
	Maximum Vertical digging depth	mm	5860
	Maximum Digging height	mm	9840
	Maximum Dumping Height	mm	6810

Note: Due to technological improvements, the above data are subject to change without prior notice.

NE530 ELECTRIC CRAWLER EXCAVATOR

Whole Machine	Weight	kg	52000	
	Bucket capacity	m3	2.5-2.8	
Electric motor	Rated power	kW	200	
	Rated voltage	V	380	
	Rated speed	r/min	1480	
Hydraulic system	System pressure	MPa	32	
	Maximum flow	L/min	2 x 380	
Rotary device	Swing speed	r/min	8	
	Tail turning radius	mm	3695	
Pilot system	System pressure	MPa	4	
	System traffic	L/min	22	
Walking device	Travel speed	km/h	3	
	Ground pressure	MPa	0.1	
	Traction force of the whole machine	kN	330	
Dimension	Boom length	m	7.06	7.06
	Arm length	m	2.6	3.38
	Maximum digging radius	m	11.4	12.02
	Maximum digging depth	m	7.0	7.76
	Maximum digging height	m	10.53	10.97
	Maximum unloading height	m	7.11	7.66
	Stick maximum digging force	kN	260	217
	Bucket maximum digging force	kN	243	236

Note: Due to technological improvements, the above data are subject to change without prior notice.